



**ULTIFRESH**  
anti-bacterial & anti-odor

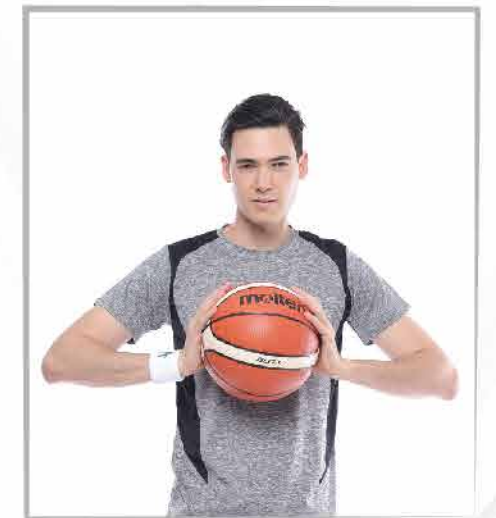
APPAREL CATALOGUE  
2022 | 2023  
VER. 5



# LATEST COLLECTION



# TRENDING STYLES





## ABOUT US

Ultifresh is an Anti-bacterial & Anti-odor brand that produces sustainable & eco-friendly apparels. Our distribution range includes non-decorated blank apparels such as t-shirts, polo t-shirts, jackets which are subsequently printed or embroidered with designs and logos.

## FUNCTIONS

### Remove Bacteria & Odor

- All Ultifresh products have Anti-Bacterial & Anti-Odor technology

### Very Durable

- Lesser bacteria means lesser fabric fibers destroyed

### Saves Water

- Only need to wash after wearing a few times

# ULTIFRESH

## WHY CHOOSE US

## BENEFITS

### Users

- Lesser washing required  
- Prevents bacteria from spreading to other clothes when washing

### Environment

- Eco-Friendly  
- Global effort to save water  
- Reduce textile wastage

### Company

- Save Costs by providing lesser uniforms

## READY-MADE

- Attractive price
- Fast delivery lead time
- Internationally certified
- Minimum order from 1 piece onwards
- Standard Asian size chart
- Up to 25 outstanding and vibrant colors for our basic collections

## SINGAPORE CUSTOM-MADE

### 1. Full Customization

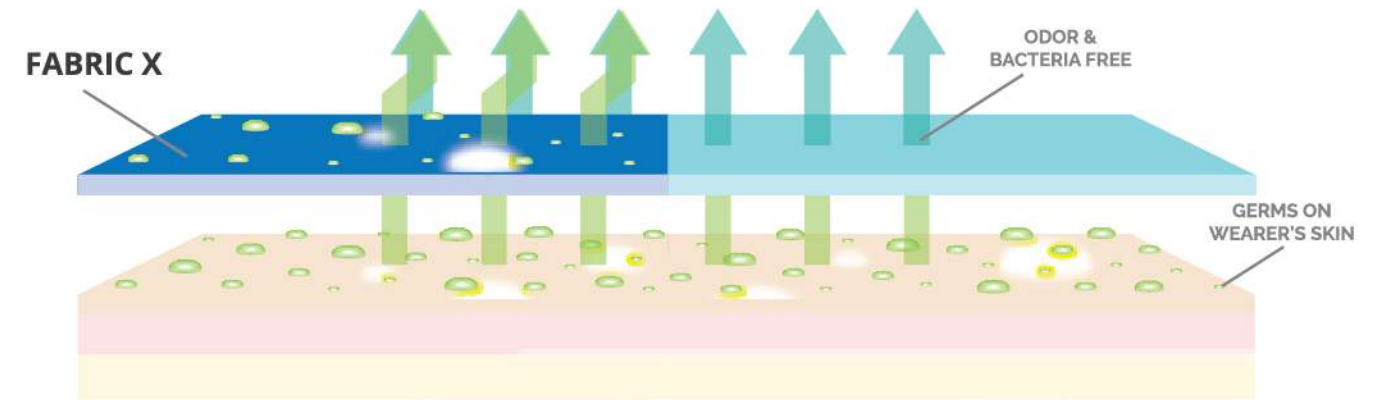
- 5000 fabric selection to choose from
- Customize own buttons and zips with logo imprinted
- More than 10 types of fabric treatments
- More than 19 different types of logo imprint methods
- Private labels and brands labels customization available

### 2. Specialization

- T-shirts, polo t-shirts, corporate button shirts, corporate jackets, school jackets, biker jackets, windbreakers, hoodies, overalls, aprons, pants etc

## ABOUT ULTIFRESH

Ultifresh is a patented fabric technology that kills 99.94% bacteria permanently. The anti-bacterial & anti-odor features can be integrated into any fabric without affecting the outlook and the hand feel of the apparel.



## BENEFITS OF ULTIFRESH

Ultifresh products are designed with copper's anti-microbial properties, allowing it to self-sterilize. It can also prevent bacteria growth, making it a safer apparel for everyone.



### ANTI-ODOR

Ultifresh technology eliminates odor causing germs on the fabric itself, leaving the wearer fresh all day long.



### INCREASED DURABILITY

Ultifresh prevents microbes from living on the apparel. Thus, it increases the longevity of the apparel, resulting into lesser textile wastage each year.



### ANTI-BACTERIAL

We come into contact with thousands of unseen bacteria everyday. Ultifresh fabric solution kills bacteria minutes upon contact.



### SAVES WATER

Ultifresh apparels require lesser wash cycle and water usage up to 75%! This unique feature allows the wearer to save water without compromising safety.



### COST SAVING

Ultifresh lowers the turnover of uniforms and apparels due to its durability, which allows wearer to wear longer without washing.



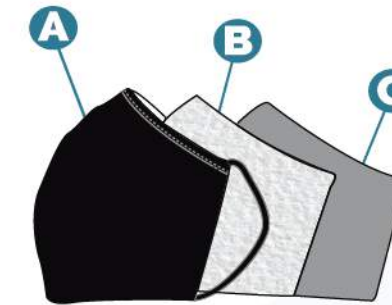
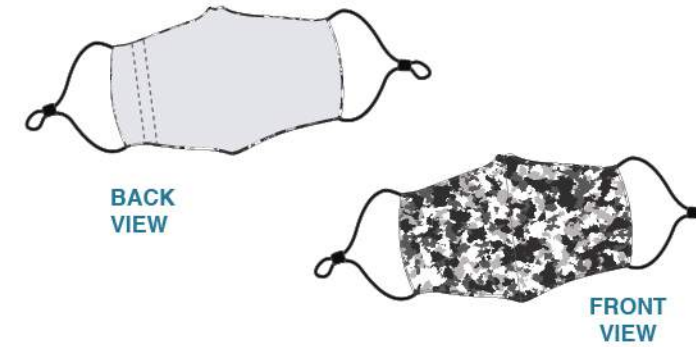
### ECO-FRIENDLY

Ultifresh supports the global Go-Green effort in conserving the Earth's natural resources such as water and reducing textile wastage.



# CONTENT

<b>Latest Collection</b>	1 - 2
<b>Why Choose Us</b>	3
<b>About Ultifresh</b>	4
<b>1. Reusable Mask Series</b>	
- Reusable Mask	6 - 8
- Filter Sheet & Adjustable Mask Strap	9 - 10
<b>2. Towel Series</b>	
- Anti-Bacterial Quick-Dry Towel	11 - 12
<b>3. Ultifresh Performance Series</b>	
- Crew Neck	13 - 19
- Polo T-Shirt	20 - 24
<b>4. Ultifresh Design Series</b>	
- Contrast Series	25 - 32
- Oriental Series	33 - 36
- Heather Series	37 - 38
- Hybrid Series	39 - 44
- Pique Series	45 - 52
<b>5. Ultifresh Outerwear Series</b>	
- Bomber Jacket	53 - 54
- Full Moon Zip Up Jacket	55 - 56
- Varsity Jacket	57 - 58
<b>6. Essential Series</b>	
- Collar Fleece Zip Up Jacket	61 - 64
- Hoodie Without Zip	65 - 66
- Hoodie With Zip	67 - 68
- Jacket In A Bag	69 - 70
- Soft Cardigan	71 - 72
- V-Neck Sweater	73 - 74
- Cotton Polo T-Shirt	75 - 76
- Cotton Short Sleeve T-Shirt (Unisex)	77 - 80
- Cotton Short Sleeve T-Shirt (Kids)	81
- Polyester Apron	82
- Long Sleeve Sweat Shirt	83 - 84
- Oxford Corporate Shirt	85 - 86
- Corporate Long Sleeve Button Shirt	87 - 88
- Corporate Short Sleeve Button Shirt	89 - 90
- Corporate Blazer, Pant & Skirt	91 - 94
<b>7. Customization</b>	
- Ultifresh Customization	95 - 96
- Polo T-Shirt Styles	97 - 98
- Jacket Styles	99 - 100
- Button & Zipper Head Styles	101 - 102



# REUSABLE MASK

ADULT SIZE

SIZE	WIDTH	HEIGHT
ADULT	7.5" / 19cm	4.75" / 12cm

Note: Size may varies +/-5% from the above mentioned chart.



- A. Outermost Layer Is With Ultifresh Treatment Of Up To 99.94% Anti Bacterial
- B. Center Layer Is Inter-Changeable Filter Sheet Fusing Of Up To BFE > 99%
- C. Innermost Layer Is 100% SoftStyle Cotton For Additional Comfort

## URM

COLORS SELECTION



URM02  
BLACK



URM03  
NAVY BLUE



URM06  
LIGHT GREY



URM07  
DARK GREY



URM13  
ORANGE



URM20  
GREEN



URMAD  
WHITE ARMY



URMGA  
GREEN ARMY



URMCF  
HIBISCUS





# REUSABLE MASK

## KIDS SIZE

SIZE	WIDTH	HEIGHT
KIDS	6.5" / 16cm	4.25" / 10.5cm

Note: Size may vary +/-5% from the above mentioned chart.



# K

### COLORS SELECTION



K0  
BLACK



K1  
LIGHT BLUE



K2  
LITTLE SHEEPS



K3  
ANIMAL WORLD



K4  
UNICORN FANTASY



K5  
DINO WORLD



K10  
LIGHT GREY



K20  
GREEN



KT2  
TWIN TOWERS



# FILTER SHEET

ADULT & KIDS



- \* High Strength Melt Blown Filter Fabric
- \* BFE>99%
- \* 10pcs Per Pack

ULTIFRESH  
anti-bacterial & anti-odor



AVFP10  
ADULT FILTER PACK



KVFP10  
KIDS FILTER PACK



MS02  
ADJUSTABLE MASK STRAP



# ANTI-BACTERIAL QUICK-DRY TOWEL

- \* Anti-Bacterial
- \* Nylon Chinlon, Polyester
- \* Compact, Lightweight, Quick-Dry
- \* Open For Customization Of Logo Webbing

Printing Method :



## UBTW

ANTI-BACTERIAL QUICK-DRY BATH TOWEL

LENGTH	WIDTH	WEIGHT
55.1" / 140CM	29.5" / 75CM	220g

Note: Size may varies +/-5% from the above mentioned chart.



UBTW01  
PEARL WHITE



UBTW03  
NAVY



UBTW05  
MAROON



UBTW06  
LIGHT GREY



UBTW11  
ADMIRAL BLUE



UBTW46  
KELLY GREEN

## USTW

ANTI-BACTERIAL QUICK-DRY SPORTS TOWEL

LENGTH	WIDTH	WEIGHT
25.6" / 65CM	13.8" / 35CM	40g

Note: Size may varies +/-5% from the above mentioned chart.



USTW01  
PEARL WHITE



USTW03  
NAVY



USTW05  
MAROON



USTW06  
LIGHT GREY



USTW11  
ADMIRAL BLUE



USTW46  
KELLY GREEN





# ULTIFRESH PERFORMANCE CREW NECK T-SHIRT (KIDS CUT)

SIZE	SHOULDER	CHEST	SLEEVE	LENGTH
24	11.5"	25"	4.5"	15.5"
26	12"	27"	5"	17"
28	12.5"	29"	5.5"	18.5"
30	13"	31"	6"	20"
32	13.5"	33"	6.5"	21.5"

Note: Size may varies +/-5% from the above mentioned chart.

- \* 100% Performance Dri-Fit Polyester
- \* Microfiber Polyester Eyelet



- \* 170GSM | 5.01oz (UDF2201)
- \* 160GSM | 4.72oz (THE REST)

## UDF22 COLORS SELECTION



UDF2201  
PEARL WHITE



UDF2202  
ONYX BLACK



UDF2203  
NAVY BLUE



UDF2204  
CRIMSON RED



UDF2212  
ROYAL BLUE



UDF2213  
ORANGE



UDF2216  
BANANA



UDF2223  
ROYAL PURPLE







# ULTIFRESH PERFORMANCE

## CREW NECK T-SHIRT (UNISEX)

- \* 100% Performance Dri-Fit Polyester
- \* Microfiber Polyester Eyelet
- \* Anti Bacterial & Anti Odor Finishing
- \* Self Fabric Collar
- \* Eco-Friendly & Water Saving

SIZE	SHOULDER	CHEST	SLEEVE	LENGTH
2XS	15"	34"	7"	25"
XS	16"	36"	7.5"	26"
S	17"	38"	8"	27"
M	18"	40"	8.5"	28"
L	19"	42"	9"	29"
XL	20"	44"	9.5"	30"
2XL	21"	46"	10"	31"
3XL	22"	48"	10.5"	32"
5XL	24"	52"	11.5"	33.5"

Note: Size may varies +/-5% from the above mentioned chart.

\* 170GSM | 5.01oz (UDF0101)

\* 160GSM | 4.72oz (THE REST)

## UDF01 COLORS SELECTION



**SGS**  
TEST REPORT

**intertek**  
Total Quality. Assured.



# ULTIFRESH PERFORMANCE

## CREW NECK T-SHIRT (FEMALE CUT)



- \* **100% Performance Dri-Fit Polyester**
- \* **Microfiber Polyester Eyelet**
- \* **FEMALE** Cutting
- \* **Eco-Friendly & Water Saving**

SIZE	SHOULDER	CHEST	SLEEVE	LENGTH
S	13"	32"	6"	22.5"
M	14"	34"	6.5"	23.5"
L	15"	36"	6.5"	24.5"
XL	16"	38"	7"	25.5"
2XL	17"	40"	7"	26.5"

Note: Size may varies +/-5% from the above mentioned chart.

\* 170GSM | 5.01oz (UDF1201)

\* 160GSM | 4.72oz (THE REST)



### UDF12 COLORS SELECTION



UDF1201  
PEARL WHITE



UDF1202  
ONYX BLACK



UDF1203  
NAVY BLUE



UDF1204  
CRIMSON RED



UDF1212  
ROYAL BLUE



UDF1213  
ORANGE



UDF1216  
BANANA



UDF1223  
ROYAL PURPLE



# ULTIFRESH PERFORMANCE CREW NECK LONG SLEEVE T-SHIRT (UNISEX)



SIZE	SHOULDER	CHEST	SLEEVE	LENGTH
2XS	15"	34"	19"	25"
XS	16"	36"	20"	26"
S	17"	38"	21"	27"
M	18"	40"	22"	28"
L	19"	42"	23"	29"
XL	20"	44"	23.5"	30"
2XL	21"	46"	23.5"	31"
3XL	22"	48"	23.5"	32"
5XL	24"	52"	24.5"	33.5"

Note: Size may varies +/-5% from the above mentioned chart.  
\* 160GSM | 4.72oz

- \* 100% Performance Dri-Fit Polyester
- \* Microfiber Polyester Eyelet
- \* Eco-Friendly & Water Saving

# ULTIFRESH PERFORMANCE POLO LONG SLEEVE T-SHIRT (UNISEX)



SIZE	SHOULDER	CHEST	SLEEVE	LENGTH
2XS	15"	34"	19"	25"
XS	16"	36"	20"	26"
S	17"	38"	21"	27"
M	18"	40"	22"	28"
L	19"	42"	23"	29"
XL	20"	44"	23.5"	30"
2XL	21"	46"	23.5"	31"
3XL	22"	48"	23.5"	32"
5XL	24"	52"	24.5"	33.5"

Note: Size may varies +/-5% from the above mentioned chart.  
\* 160GSM | 4.72oz

- \* 100% Performance Dri-Fit Polyester
- \* Microfiber Polyester Eyelet
- \* Eco-Friendly & Water Saving

## UDF26 COLORS SELECTION



UDF2601  
PEARL WHITE



UDF2602  
ONYX BLACK



UDF2603  
NAVY BLUE



UDF2607  
IRON GREY



UDF2613  
ORANGE



UDF2621  
BASIL GREEN

## UDF27 COLORS SELECTION



UDF2701  
PEARL WHITE



UDF2702  
ONYX BLACK



UDF2703  
NAVY BLUE



UDF2705  
MAROON RED



UDF2707  
IRON GREY



UDF2710  
LIGHT BLUE



UDF2712  
ROYAL BLUE



UDF2713  
ORANGE



UDF2721  
BASIL GREEN





# ULTIFRESH PERFORMANCE

## POLO T-SHIRT (UNISEX)

- \* 100% Performance Dri-Fit Polyester
- \* Microfiber Polyester Eyelet
- \* Anti Bacterial & Anti Odor Finishing
- \* Matching Collar Rib
- \* Eco-Friendly & Water Saving

SIZE	SHOULDER	CHEST	SLEEVE	LENGTH
2XS	15"	34"	7"	25"
XS	16"	36"	7.5"	26"
S	17"	38"	8"	27"
M	18"	40"	8.5"	28"
L	19"	42"	9"	29"
XL	20"	44"	9.5"	30"
2XL	21"	46"	10"	31"
3XL	22"	48"	10.5"	32"
5XL	24"	52"	11.5"	33.5"

Note: Size may varies +/-5% from the above mentioned chart.

\* 170GSM | 5.01oz (UDF0101)

\* 160GSM | 4.72oz (THE REST)

## UDF05

### COLORS SELECTION



UDF0501  
PEARL WHITE



UDF0502  
ONYX BLACK



UDF0503  
NAVY BLUE



UDF0504  
CRIMSON RED



UDF0505  
MAROON RED



UDF0506  
LIGHT GREY



UDF0507  
IRON GREY



UDF0508  
TURQUOISE



UDF0509  
MAGENTA PINK



UDF0510  
LIGHT BLUE



UDF0511  
ADMIRAL BLUE



UDF0512  
ROYAL BLUE



UDF0513  
ORANGE



UDF0516  
BANANA



UDF0517  
TUSCAN YELLOW



UDF0518  
LIME GREEN



UDF0521  
BASIL GREEN



UDF0522  
BARLEY BEIGE



UDF0523  
ROYAL PURPLE



# ULTIFRESH PERFORMANCE

## POLO T-SHIRT (FEMALE CUT)



- \* 100% Performance Dri-Fit Polyester
- \* Microfiber Polyester Eyelet
- \* **FEMALE** Cutting
- \* Eco-Friendly & Water Saving

SIZE	SHOULDER	CHEST	SLEEVE	LENGTH
S	13"	32"	6"	22.5"
M	14"	34"	6.5"	23.5"
L	15"	36"	6.5"	24.5"
XL	16"	38"	7"	25.5"
2XL	17"	40"	7"	26.5"

Note: Size may varies +/-5% from the above mentioned chart.

- \* 170GSM | 5.01oz (UDF1801)
- \* 160GSM | 4.72oz (THE REST)



## UDF18 COLORS SELECTION



UDF1801  
PEARL WHITE



UDF1802  
ONYX BLACK



UDF1803  
NAVY BLUE



UD1804  
CRIMSON RED



UDF1812  
ROYAL BLUE



UDF1813  
ORANGE



UDF1816  
BANANA



UD1823  
ROYAL PURPLE







- \* 100% Dri-Fit Polyester
- \* Interlock Weave
- \* Moisture Wicking & Sweat Absorbent
- \* Eco-Friendly & Water Saving

# ULTIFRESH CONTRAST

## SIDE PANEL CREW NECK T-SHIRT

SIZE	SHOULDER	CHEST	SLEEVE	LENGTH
2XS	15"	34"	7"	25"
XS	16"	36"	7.5"	26"
S	17"	38"	8"	27"
M	18"	40"	8.5"	28"
L	19"	42"	9"	29"
XL	20"	44"	9.5"	30"
2XL	21"	46"	10"	31"
3XL	22"	48"	10.5"	32"
5XL	24"	52"	11.5"	33.5"

Note: Size may varies +/-5% from the above mentioned chart.  
\* 160GSM | 4.72oz

## UDF07 COLORS SELECTION



UDF0701  
WHITE + ORANGE



UDF0702  
BLACK + WHITE



UDF0703  
NAVY + WHITE



UDF0710  
LIGHT BLUE + WHITE



UDF0723  
PURPLE + WHITE



UDF0733  
BLUE + ORANGE

SGS  
TEST REPORT

intertek  
Total Quality. Assured.





**SGS**  
TEST REPORT

**intertek**  
Total Quality. Assured.

Contrast Color  
Piping with  
Raglan Sleeve Cut

Anti-Bacterial  
& Anti-Odor  
Finishing



BACK  
VIEW

FRONT  
VIEW

- \* **100% Dri-Fit Polyester**
- \* **Eyelet Weave**
- \* **Matching Collar Rib**
- \* **Moisture Wicking & Sweat Absorbent**
- \* **Eco-Friendly & Water Saving**

# ULTIFRESH CONTRAST

## VOV PIPING CREW NECK T-SHIRT

SIZE	CHEST	SLEEVE	LENGTH
2XS	34"	7"	25"
XS	36"	7.5"	26"
S	38"	8"	27"
M	40"	8.5"	28"
L	42"	9"	29"
XL	44"	9.5"	30"
2XL	46"	10"	31"
3XL	48"	10.5"	32"
5XL	52"	11.5"	33.5"

Note: Size may varies +/-5% from the above mentioned chart.

\* 170GSM | 5.01oz (UDP0801)

\* 160GSM | 4.72oz (THE REST)

## UDP08 COLORS SELECTION



UDP0801  
WHITE + BLACK



UDP0802  
BLACK + RED



UDP0807  
DARK GREY + WHITE



UDP0813  
ORANGE + BLACK



# ULTIFRESH CONTRAST

CS SASH POLO T-SHIRT (UNISEX)



## UDF13 COLORS SELECTION



UDF1301  
WHITE + GREEN  
+ DARK GREY



UDF1302  
BLACK + RED



UDF1306  
LIGHT GREY +  
WHITE + BLUE



UDF1307  
DARK GREY +  
WHITE + BLUE



Anti-Bacterial  
& Anti-Odor  
Finishing

Contrast  
Side Panel



- \* 100% Dri-Fit Polyester
- \* Interlock Weave
- \* Moisture Wicking & Sweat Absorbent
- \* Eco-Friendly & Water Saving

SIZE	SHOULDER	CHEST	SLEEVE	LENGTH
2XS	15"	34"	7"	25"
XS	16"	36"	7.5"	26"
S	17"	38"	8"	27"
M	18"	40"	8.5"	28"
L	19"	42"	9"	29"
XL	20"	44"	9.5"	30"
2XL	21"	46"	10"	31"
3XL	22"	48"	10.5"	32"
5XL	24"	52"	11.5"	33.5"

Note: Size may varies +/-5% from the above mentioned chart.

\* 160GSM | 5.64oz





# ULTIFRESH CONTRAST

## T MAX POLO T-SHIRT (UNISEX)

SIZE	SHOULDER	CHEST	SLEEVE	LENGTH
2XS	15"	34"	7"	25"
XS	16"	36"	7.5"	26"
S	17"	38"	8"	27"
M	18"	40"	8.5"	28"
L	19"	42"	9"	29"
XL	20"	44"	9.5"	30"
2XL	21"	46"	10"	31"
3XL	22"	48"	10.5"	32"
5XL	24"	52"	11.5"	33.5"

- \* 100% Dri-Fit Polyester
- \* Interlock Weave
- \* Moisture Wicking & Sweat Absorbent
- \* Eco-Friendly & Water Saving

Note: Size may varies +/-5% from the above mentioned chart.  
\* 160GSM | 5.64oz

## UDF19 COLORS SELECTION



UDF1902  
BLACK + RED



UDF1906  
GREY + LIGHT BLUE



UDF1912  
ROYAL BLUE + GREY



UDF1930  
GREEN + WHITE





**UDF20**  
COLORS SELECTION



UDF2001  
WHITE + YELLOW



UDF2002  
BLACK + RED



UDF2003  
DARK BLUE + ROYAL BLUE



UDF2004  
RED + BLACK



UDF2010  
LIGHT BLUE + WHITE



UDF2013  
ORANGE + WHITE



UDF2027  
WHITE + RED

**ULTIFRESH**  
**ORIENTAL**  
**ZIP UP COLLAR POLO T-SHIRT**



- \* 100% Dri-Fit Polyester
- \* Interlock Weave
- \* Contrast Piping
- \* Moisture Wicking & Sweat Absorbent
- \* Eco-Friendly & Water Saving

SIZE	SHOULDER	CHEST	SLEEVE	LENGTH
2XS	15"	34"	7"	25"
XS	16"	36"	7.5"	26"
S	17"	38"	8"	27"
M	18"	40"	8.5"	28"
L	19"	42"	9"	29"
XL	20"	44"	9.5"	30"
2XL	21"	46"	10"	31"
3XL	22"	48"	10.5"	32"
5XL	24"	52"	11.5"	33.5"

Note: Size may varies +/-5% from the above mentioned chart.  
\* 160GSM | 4.72oz







# ULTIFRESH

## ORIENTAL

### ZIP UP COLLAR POLO T-SHIRT

SIZE	SHOULDER	CHEST	SLEEVE	LENGTH
S	13"	32"	6"	22.5"
M	14"	34"	6.5"	23.5"
L	15"	36"	6.5"	24.5"
XL	16"	38"	7"	25.5"

Note: Size may varies +/-5% from the above mentioned chart.

\* 160GSM | 5.64oz

- \* 100% Dri-Fit Polyester
- \* Interlock Weave
- \* **FEMALE** Cutting

- \* Contrast Piping
- \* Moisture Wicking & Sweat Absorbent
- \* Eco-Friendly & Water Saving

## UDF28

### COLORS SELECTION



UDF2801  
WHITE + YELLOW



UDF2802  
BLACK + RED



UDF2803  
DARK BLUE + ROYAL BLUE



UDF2804  
RED + BLACK



UDF2810  
LIGHT BLUE + WHITE



UDF2813  
ORANGE + WHITE



UDF2827  
WHITE + RED



# ULTIFRESH HEATHER

## EDGE CREW NECK T-SHIRT

Anti-Bacterial  
& Anti-Odor  
Finishing

Edge Cut &  
Sewn Design



**UDF17**  
COLORS SELECTION

- \* 47% Performance Polyester
- \* 47% Melange Dri-Fit + 6% Spandex
- \* Moisture Wicking & Sweat Absorbent
- \* Eco-Friendly & Water Saving

SIZE	SHOULDER	CHEST	SLEEVE	LENGTH
2XS	15"	34"	7"	25"
XS	16"	36"	7.5"	26"
S	17"	38"	8"	27"
M	18"	40"	8.5"	28"
L	19"	42"	9"	29"
XL	20"	44"	9.5"	30"
2XL	21"	46"	10"	31"
3XL	22"	48"	10.5"	32"
5XL	24"	52"	11.5"	33.5"

Note: Size may varies +/-5% from the above mentioned chart.  
\* 170GSM | 5.01oz



UDF1702  
ONYX BLACK



UDF1703  
NAVY BLUE



UDF1706  
LIGHT GREY



UDF1710  
LIGHT BLUE



UDF1712  
ROYAL BLUE







# ULTIFRESH HYBRID

## MINIMALIST POLO T-SHIRT (UNISEX)

SIZE	SHOULDER	CHEST	SLEEVE	LENGTH
2XS	15"	34"	7"	25"
XS	16"	36"	7.5"	26"
S	17"	38"	8"	27"
M	18"	40"	8.5"	28"
L	19"	42"	9"	29"
XL	20"	44"	9.5"	30"
2XL	21"	46"	10"	31"
3XL	22"	48"	10.5"	32"
5XL	24"	52"	11.5"	33.5"

- \* 50% Polyester + 50% Cotton
- \* Outer Polyester + Inner Cotton
- \* Moisture Wicking & Sweat Absorbent
- \* Eco-Friendly & Water Saving

Note: Size may varies +/-5% from the above mentioned chart.  
\* 180GSM | 6.35oz

## UCP11

### COLORS SELECTION



UCP1101  
WHITE + BLACK



UCP1102  
BLACK + WHITE



UCP1103  
NAVY + WHITE



UCP1129  
BLACK + GOLD

**GOLD**  
SERIES AVAILABLE

**SGS**  
TEST REPORT

**intertek**  
Total Quality Assured.





# ULTIFRESH HYBRID

## CONTRA POLO T-SHIRT (UNISEX)



- \* 50% Polyester + 50% Cotton
- \* Outer Polyester + Inner Cotton
- \* Moisture Wicking & Sweat Absorbent
- \* Eco-Friendly & Water Saving

SIZE	SHOULDER	CHEST	SLEEVE	LENGTH
2XS	15"	34"	7"	25"
XS	16"	36"	7.5"	26"
S	17"	38"	8"	27"
M	18"	40"	8.5"	28"
L	19"	42"	9"	29"
XL	20"	44"	9.5"	30"
2XL	21"	46"	10"	31"
3XL	22"	48"	10.5"	32"
5XL	24"	52"	11.5"	33.5"

Note: Size may varies +/-5% from the above mentioned chart.  
 \* 190GSM | 6.70oz



### UCP13

#### COLORS SELECTION







# ULTIFRESH HYBRID CONTRA POLO T-SHIRT (FEMALE)

SIZE	SHOULDER	CHEST	SLEEVE	LENGTH
S	13"	32"	6"	22.5"
M	14"	34"	6.5"	23.5"
L	15"	36"	6.5"	24.5"
XL	16"	38"	7"	25.5"

Note: Size may varies +/-5% from the above mentioned chart.

\* 190GSM | 6.70oz

- \* 50% Polyester + 50% Cotton
- \* **FEMALE** Cutting
- \* Outer Polyester + Inner Cotton

- \* Moisture Wicking & Sweat Absorbent
- \* Eco-Friendly & Water Saving

## UCP23 COLORS SELECTION



UCP2301  
WHITE + GREY



UCP2307  
GREY + RED



UCP2310  
LIGHT BLUE + WHITE



UCP2334  
WHITE + GREEN



UCP2335  
WHITE + LIGHT BLUE





# ULTIFRESH DOUBLE PIOQUE

## PREMIUM PLAIN POLO T-SHIRT (UNISEX)

- \* 60% Polyester + 40% Cotton
- \* Moisture Wicking & Sweat Absorbent
- \* Eco-Friendly & Water Saving

SIZE	SHOULDER	CHEST	SLEEVE	LENGTH
2XS	15"	34"	7"	25"
XS	16"	36"	7.5"	26"
S	17"	38"	8"	27"
M	18"	40"	8.5"	28"
L	19"	42"	9"	29"
XL	20"	44"	9.5"	30"
2XL	21"	46"	10"	31"
3XL	22"	48"	10.5"	32"
4XL	23"	50"	11"	33"
5XL	24"	52"	11.5"	33.5"

Note: Size may varies +/-5% from the above mentioned chart.

\* 220GSM | 7.76oz

## UH27 COLORS SELECTION



UH2702  
BLACK



UH2706  
LIGHT GREY



UH2707  
DARK GREY



UH2712  
NAVY BLUE

**SGS**  
TEST REPORT

**intertek**  
Total Quality. Assured.





**UH02**  
COLORS SELECTION



UH0202  
BLACK



UH0206  
LIGHT GREY



UH0207  
DARK GREY



UH0212  
NAVY BLUE

# ULTIFRESH PIOQUE

## FD TWIN TIPPED POLO T-SHIRT (UNISEX)

Anti-Bacterial  
& Anti-Odor  
Finishing

Double  
Pique Knit



BACK  
VIEW

FRONT  
VIEW



- \* **60% Polyester + 40% Cotton**
- \* **Dual Stripe Design**
- \* **Moisture Wicking & Sweat Absorbent**
- \* **Eco-Friendly & Water Saving**

SIZE	SHOULDER	CHEST	SLEEVE	LENGTH
2XS	15"	34"	7"	25"
XS	16"	36"	7.5"	26"
S	17"	38"	8"	27"
M	18"	40"	8.5"	28"
L	19"	42"	9"	29"
XL	20"	44"	9.5"	30"
2XL	21"	46"	10"	31"
3XL	22"	48"	10.5"	32"
4XL	23"	50"	11"	33"
5XL	24"	52"	11.5"	33.5"

Note: Size may varies +/-5% from the above mentioned chart.  
\* 220GSM | 7.76oz







# ULTIFRESH PIOQUE

## FD TWIN TIPPED POLO T-SHIRT (FEMALE)

SIZE	SHOULDER	CHEST	SLEEVE	LENGTH
S	13"	32"	6"	22.5"
M	14"	34"	6.5"	23.5"
L	15"	36"	6.5"	24.5"
XL	16"	38"	7"	25.5"

Note: Size may varies +/-5% from the above mentioned chart.

\* 220GSM | 7.76oz

- \* **60% Polyester + 40% Cotton**
- \* **FEMALE** Cutting
- \* **Dual Stripe Design**
- \* **Moisture Wicking & Sweat Absorbent**
- \* **Eco-Friendly & Water Saving**

## UH12 COLORS SELECTION



UH1202  
BLACK



UH1206  
LIGHT GREY



UH1207  
DARK GREY



UH1212  
NAVY BLUE





Anti-Bacterial & Anti-Odor Finishing

Contrast Mandarin Collar Design



BACK VIEW

FRONT VIEW

# ULTIFRESH PIOQUE

## ACE COLLAR POLO T-SHIRT (UNISEX)

SIZE	SHOULDER	CHEST	SLEEVE	LENGTH
2XS	15"	34"	7"	25"
XS	16"	36"	7.5"	26"
S	17"	38"	8"	27"
M	18"	40"	8.5"	28"
L	19"	42"	9"	29"
XL	20"	44"	9.5"	30"
2XL	21"	46"	10"	31"
3XL	22"	48"	10.5"	32"
5XL	24"	52"	11.5"	33.5"

Note: Size may varies +/-5% from the above mentioned chart.

\* 220GSM | 7.76oz

- \* 60% Polyester + 40% Cotton
- \* Double Pique Knit
- \* Dual Stripe Design
- \* Moisture Wicking & Sweat Absorbent
- \* Eco-Friendly & Water Saving

## UH03 COLORS SELECTION



UH0301  
WHITE + NAVY + RED



UH0302  
BLACK + GREY + RED



UH0307  
NAVY + GREY + RED



UH0330  
LIGHT GREY + BLACK + RED





Anti-Bacterial  
& Anti-Odor  
Finishing

Matching  
Collar Rib



- \* **100% Performance Dri-Fit Polyester**
- \* **100% Polyester Inner Lining**
- \* **Moisture Wicking & Sweat Absorbent**
- \* **Eco-Friendly & Water Saving**

# ULTIFRESH BOMBER

## ZIP UP JACKET (UNISEX)

SIZE	SHOULDER	CHEST	SLEEVE	LENGTH
2XS	16"	37"	21.5"	25"
XS	17"	39"	22.5"	26"
S	18"	41"	23.5"	27"
M	18.5"	43"	24"	28"
L	19"	45"	25"	29"
XL	20"	47"	25.5"	30"
2XL	21"	49"	26.5"	31"
3XL	22"	51"	27"	32"
4XL	23"	53"	27.5"	33"
5XL	24"	55"	28"	34"

Note: Size may vary +/-5% from the above mentioned chart.

\* SHELL - 55GSM | 1.94oz

\* INNER - 160GSM | 5.64oz

## UVJ01

### COLORS SELECTION



UVJ0102  
BLACK



UVJ0103  
NAVY



UVJ0105  
MAROON



UVJ0120  
OLIVE



UVJ0128  
ORANGE

**SGS**  
TEST REPORT

**intertek**  
Total Quality. Assured.





# ULTIFRESH FULL MOON

## ZIP UP JACKET (UNISEX)

SIZE	SHOULDER	CHEST	SLEEVE	LENGTH
2XS	16"	37"	21.5"	25"
XS	17"	39"	22.5"	26"
S	18"	41"	23.5"	27"
M	18.5"	43"	24"	28"
L	19"	45"	25"	29"
XL	20"	47"	25.5"	30"
2XL	21"	49"	26.5"	31"
3XL	22"	51"	27"	32"
4XL	23"	53"	27.5"	33"

- \* 92% Polyester + 8% Spandex
- \* Side Zip Pocket
- \* Matching Collar Rib
- \* Moisture Wicking & Sweat Absorbent
- \* Eco-Friendly & Water Saving

Note: Size may varies +/-5% from the above mentioned chart.

\* 280GSM | 8.26oz

## UVJ03 COLORS SELECTION



UVJ0302  
BLACK



UVJ0303  
NAVY



UVJ0307  
LIGHT GREY





- \* 92% Polyester + 8% Spandex
- \* Color Matching Matt Button
- \* 2 Front Pockets
- \* Moisture Wicking & Sweat Absorbent
- \* Eco-Friendly & Water Saving

# ULTIFRESH VARSITY JACKET

SIZE	SHOULDER	CHEST	SLEEVE	LENGTH
2XS	16"	37"	22"	23.5"
XS	17"	39"	22.5"	24.5"
S	18"	41"	23.5"	25.5"
M	18.5"	43"	24"	26.5"
L	19.5"	45"	25"	27.5"
XL	20"	47"	25.5"	28.5"
2XL	21"	49"	26.5"	29.5"
3XL	22"	51"	27.5"	30.5"
4XL	23"	53"	28"	31.5"

Note: Size may varies +/-5% from the above mentioned chart.

\* 280GSM | 8.26oz

## UVJ05 COLORS SELECTION



UVJ0502  
BLACK + WHITE



UVJ0503  
NAVY BLUE + WHITE



UVJ0504  
CRIMSON RED + WHITE



UVJ0512  
ROYAL BLUE + WHITE



UVJ0526  
BLACK + RED



# READY STOCK ESSENTIALS

MINIMALISM  
IS NOT A STYLE,  
IT IS AN ATTITUDE,  
A WAY OF BEING.

C. SILVESTRIN





READY STOCK  
ESSENTIALS

**BEAM**  
QUALITY APPAREL  
**COLLAR FLEECE**  
**ZIP UP JACKET (UNISEX)**



SIZE	WAIST	CHEST	SLEEVE	LENGTH
S	43"	42"	23"	25"
M	44"	44"	24"	26"
L	46"	45"	25"	26"
XL	47"	47"	26"	27"
2XL	49"	48"	26"	28"
3XL	50"	50"	27"	29"

Note: Size may varies +/-5% from the above mentioned chart.

\* 280GSM | 8.20oz

- **100% Polyester Reverse Dual Sided Fleece**
- **Full Zip Stand Up Collar**
- **Elastic Sleeve End**
- **Zip On Both Sided Pocket**
- **Elastic Cord At Hem For Hem Adjustment**

**OWC45**  
COLORS SELECTION



OWC4502  
ONYX BLACK



OWC4504  
CRIMSON RED



OWC4512  
ROYAL BLUE





**BEAM**  
QUALITY APPAREL  
**COLLAR FLEECE**  
**ZIP UP JACKET (FEMALE)**



SIZE	WAIST	CHEST	SLEEVE	LENGTH
S	37"	35"	22"	23"
M	39"	36"	23"	24"
L	40"	38"	23"	25"
XL	42"	39"	24"	26"
2XL	43"	41"	24"	26"
3XL	45"	43"	25"	27"

Note: Size may varies +/-5% from the above mentioned chart.

\* 280GSM | 8.20oz

- **100% Polyester Reverse Dual Sided Fleece**
- **FEMALE** Cutting
- Full Zip Stand Up Collar
- Elastic Sleeve End
- Zip On Both Sided Pocket
- Elastic Cord At Hem For Hem Adjustment

**OWC55**  
COLORS SELECTION



OWC5502  
ONYX BLACK



OWC5504  
CRIMSON RED



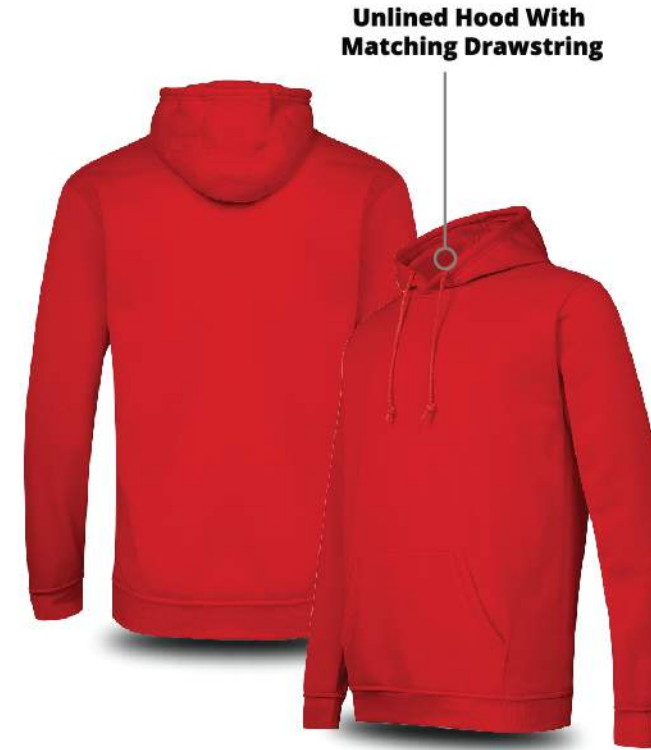
OWC5512  
ROYAL BLUE

READY STOCK  
ESSENTIALS





**BEAM**  
QUALITY APPAREL  
**HOODIE WITHOUT ZIP**



- 65% Cotton + 35% Polyester
- Kangaroo Pockets With Ribbed Finishing
- Double Needle Cuffs And Waistband For Extra Durability.

SIZE	SHOULDER	CHEST	SLEEVE	LENGTH
2XS	15"	34"	23"	25"
XS	16"	36"	24.5"	25.5"
S	17"	38"	24.5"	26"
M	18"	41"	25"	27.5"
L	18.5"	43"	26"	29"
XL	19"	46"	27"	30"
2XL	20"	48"	27.5"	31"
3XL	21"	50"	28"	32"
4XL	21.5"	52"	29"	33"

Note: Size may varies +/-5% from the above mentioned chart.  
\* 220GSM | 6.50oz

**HDR30**  
COLORS SELECTION



HDR3001  
PEARL WHITE



HDR3002  
ONYX BLACK



HDR3003  
NAVY BLUE



HDR3004  
CRIMSON RED



HDR3006  
LIGHT GREY

READY STOCK  
ESSENTIALS





8-022M

READY STOCK  
ESSENTIALS

Unlined Hood With  
Matching Drawstring



- 65% Cotton + 35% Polyester
- Pouch Pockets
- Matching Zip
- Double Needle Cuffs And Waistband For Extra Durability

**BEAM**  
QUALITY APPAREL  
**HOODIE  
WITH ZIP**

SIZE	SHOULDER	CHEST	SLEEVE	LENGTH
2XS	15"	34"	23"	25"
XS	16"	36"	24.5"	25.5"
S	17"	38"	24.5"	26"
M	18"	41"	25"	27.5"
L	18.5"	43"	26"	29"
XL	19"	46"	27"	30"
2XL	20"	48"	27.5"	31"
3XL	21"	50"	28"	32"
4XL	21.5"	52"	29"	33"

Note: Size may varies +/-5% from the above mentioned chart.

\* 220GSM | 6.50oz

**HDR40**  
COLORS SELECTION



HDR4001  
PEARL WHITE



HDR4002  
ONYX BLACK



HDR4003  
NAVY BLUE



HDR4004  
CRIMSON RED



HDR4006  
LIGHT GREY





**BEAM**  
QUALITY APPAREL  
**LIGHTWEIGHT  
MICROFIBER  
JACKET IN A BAG (PACKABLE)**

SIZE	CHEST	SLEEVE	LENGTH
S	40"	27.5"	25"
M	41"	28.5"	26"
L	43"	29"	26.5"
XL	44"	30"	27"
2XL	46"	31"	28"
3XL	48"	31.5"	29"
4XL	49"	32.5"	29.5"

Note: Size may varies +/-5% from the above mentioned chart.

- 100% Light Weight Polyester
- UPF40 + Coating
- Fully Sewn Built In Hoodie Design
- Packable Drawstring Bag Included
- Come with Unique Pattern Prints in Front Panel

**AKJ01**  
COLORS SELECTION



AKJ0101  
BLACK



AKJ0102  
ROYAL BLUE



AKJ0103  
LIME GREEN



AKJ0104  
ORANGE



AKJ0105  
YELLOW



AKJ0106  
SKY BLUE



AKJ0107  
RED



AKJ0108  
BRIGHT PINK



AKJ0110  
PINK



AKJ0111  
WHITE

READY STOCK  
ESSENTIALS





**BEAM**  
QUALITY APPAREL  
**CLASSIC**  
**SOFT CARDIGAN**



SIZE	SHOULDER	CHEST	SLEEVE	LENGTH
S	16"	38"	24"	25.5"
M	16.5"	40"	24"	26"
L	17"	42"	24"	27"
XL	17.5"	44"	25"	27.5"
2XL	18"	46"	25"	28"
3XL	18.5"	48"	25"	28.5"
5XL	19.5"	52"	26"	30"

Note: Size may varies +/-5% from the above mentioned chart.

\* 130GSM | 8.88oz

**ARC10**  
COLORS SELECTION



ARC1001  
DARK GREY



ARC1002  
NAVY BLUE



ARC1003  
GREEN



ARC1004  
BLACK



ARC1005  
BROWN



ARC1006  
MAROON

READY STOCK  
ESSENTIALS





READY STOCK  
ESSENTIALS

**BEAM**  
QUALITY APPAREL  
**CLASSIC  
V-NECK SWEATER**

SIZE	SHOULDER	CHEST	SLEEVE	LENGTH
S	15.5"	36"	23"	25"
M	16"	38"	25"	25.5"
L	16.5"	40"	25"	26"
XL	17"	41"	25"	27"
2XL	17.5"	42.5"	26"	28"
3XL	18"	44"	26"	29"
5XL	18.5"	45.5"	26.5"	30"

Note: Size may varies +/-5% from the above mentioned chart.  
\* 130GSM | 8.88oz



- \* Matching Rib
- \* 100% Cotton
- \* Fitted Cut

**ARS10**  
COLORS SELECTION



ARS1001  
DARK GREY



ARS1002  
NAVY BLUE



ARS1003  
GREEN



ARS1004  
BLACK



ARS1005  
BROWN



ARS1006  
MAROON





READY STOCK  
ESSENTIALS

**POLO T-SHIRT  
(UNISEX)**

- 100% Premium "LACOSTE" Fabric
- Matching Color Button
- Matching Ribbed Collar & Cuffs
- Available In 15 Colors
- XS - 3XL Size

SIZE	SHOULDER	CHEST	SLEEVE	LENGTH
XS	15"	36"	8"	26"
S	16"	38"	8.5"	27"
M	18"	40"	8.5"	28"
L	18"	41"	9"	29"
XL	19"	42"	9"	30"
2XL	20"	44"	9.5"	30.5"
3XL	21"	48"	9.5"	31"

Note: Size may varies +/-5% from the above mentioned chart.

\* 220GSM



**UPT01**  
COLORS SELECTION



UPT01-01  
WHITE



UPT01-02  
BLACK  
(READY STOCK)



UPT01-03  
NAVY BLUE



UPT01-04  
RED



UPT01-05  
MAROON



UPT01-11  
ROYAL BLUE



UPT01-13  
ORANGE



UPT01-17  
YELLOW



UPT01-18  
LIME GREEN



UPT01-23  
PURPLE



UPT01-40  
BOTTLE GREEN



UPT01-44  
AQUA



UPT01-45  
FUSCHIA



UPT01-46  
KELLY GREEN



UPT01-47  
GREY MELANGE





READY STOCK  
ESSENTIALS

## SHORT SLEEVE T-SHIRT (UNISEX)

- 100% Premium Cotton (Unisex)
- Matching Ribbed Collar
- Available In 18 Colors
- XS - 5XL Size

SIZE	SHOULDER	CHEST	SLEEVE	LENGTH
XS	15"	36"	7"	26"
S	17"	38"	7.5"	27"
M	18"	40"	7.5"	28"
L	19"	42"	8"	29"
XL	20"	44"	8"	30"
2XL	20.5"	46"	8.5"	31"
3XL	22"	48"	8.5"	31.5"
4XL	23"	50"	9"	32"
5XL	24"	52"	9.5"	33"

Note: Size may varies +/-5% from the above mentioned chart.

\* 170GSM - 175GSM



## USS01 COLORS SELECTION



USS01-01  
WHITE



USS01-02  
BLACK  
(READY STOCK)



USS01-03  
NAVY BLUE



USS01-04  
RED



USS01-05  
MAROON



USS01-12  
ROYAL BLUE



USS01-13  
ORANGE



USS01-17  
YELLOW



USS01-18  
LIME GREEN



USS01-23  
PURPLE



USS01-39  
INDIGO BLUE



USS01-40  
BOTTLE GREEN



USS01-41  
OLIVE



USS01-42  
SAND



USS01-43  
STONE



USS01-44  
AQUA



USS01-45  
FUSCHIA



USS01-46  
KELLY GREEN





READY STOCK  
ESSENTIALS



**USSG01**  
COLORS SELECTION

**200GSM  
SHORT SLEEVE  
T-SHIRT (UNISEX)**

- 100% Premium Cotton (Unisex)
- Matching Ribbed Collar
- XS - 5XL Size

SIZE	SHOULDER	CHEST	SLEEVE	LENGTH
XS	15"	36"	7"	26"
S	17"	38"	7.5"	27"
M	18"	40"	7.5"	28"
L	19"	42"	8"	29"
XL	20"	44"	8"	30"
2XL	20.5"	46"	8.5"	31"
3XL	22"	48"	8.5"	31.5"
4XL	23"	50"	9"	32"
5XL	24"	52"	9.5"	33"



USSG01-01  
WHITE



USSG01-02  
BLACK  
(READY STOCK)

Note: Size may varies +/-5% from the above mentioned chart.

\* 200GSM



# BEAM

QUALITY APPAREL

## SHORT SLEEVE T-SHIRT (KIDS)

- 100% Premium Cotton
- Matching Ribbed Collar
- Available In 15 Colors
- 2/4 years - 13/14 years

SIZE	SHOULDER	CHEST	SLEEVE	LENGTH
2- 4	11"	24"	5"	17"
5 - 6	12"	26"	6"	18"
7 - 8	13"	28"	6.5"	20"
9 - 10	15"	30"	6.5"	21"
11 - 12	15"	34"	7"	23"
13 - 14	17"	36"	7"	24"

Note: Size may varies +/-5% from the above mentioned chart.

\* 170GSM - 175GSM



## KSS01

COLORS SELECTION



KSS01-01  
WHITE



KSS01-02  
BLACK



KSS01-03  
NAVY BLUE



KSS01-05  
MAROON



KSS01-12  
ROYAL BLUE



KSS01-13  
ORANGE



KSS01-17  
YELLOW



KSS01-18  
LIME GREEN



KSS01-23  
PURPLE



KSS01-39  
INDIGO BLUE



KSS01-40  
BOTTLE GREEN



KSS01-41  
OLIVE



KSS01-44  
AQUA



KSS01-45  
FUSCHIA



KSS01-46  
KELLY GREEN

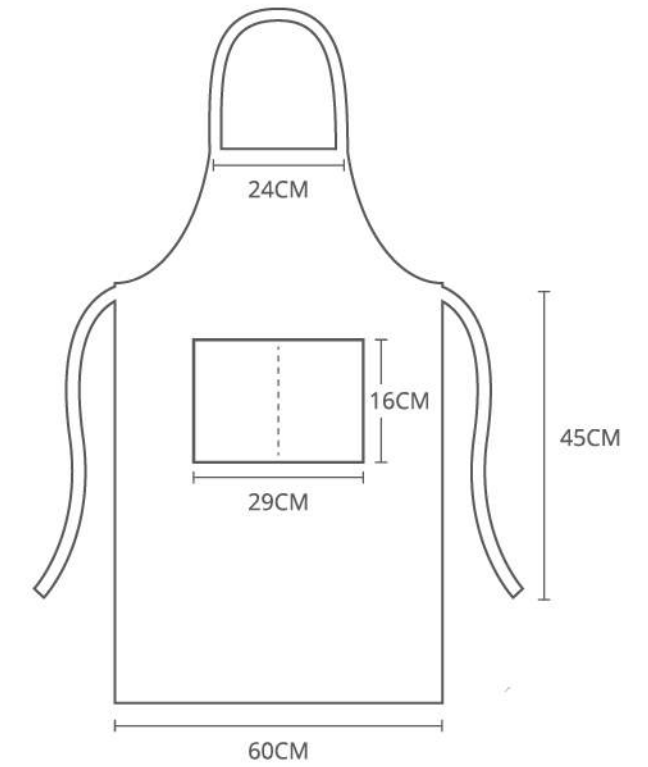
# BEAM

QUALITY APPAREL

## APRON

### 100% POLYESTER

- 100% Polyester
- Back Lace Design
- Front Pockets
- Customizable
- Available In 10 Colors
- Free Size
- All Ready Stock



Note: dimension may vary +/- 5% from the above mentioned chart.

## APR10

COLORS SELECTION



APR101  
BURGUNDY



APR102  
ORANGE



APR103  
PEARL WHITE



APR104  
SKY BLUE



APR105  
LIME GREEN



APR106  
ROSE PINK



APR107  
YELLOW



APR108  
BLACK



APR109  
COFFEE



APR110  
RED





**LONG SLEEVE  
SWEAT SHIRT**



- 65% Cotton + 35% Polyester
- Crew Neck, Long Sleeve Design
- 6 Available Colors
- Double needle cuffs and waistband for extra durability

SIZE	SHOULDER	CHEST	LENGTH
2XS	15"	34"	25"
XS	16"	36"	26"
S	17"	39"	26"
M	18"	41"	28"
L	19"	43"	29"
XL	19"	46"	30"
2XL	20"	48"	31"
3XL	21"	50"	32"
4XL	22"	53"	33"

Note: Size may varies +/-5% from the above mentioned chart.  
\* 220GSM | 6.50oz

**RGN21**  
COLORS SELECTION



RGN2101  
PEARL WHITE



RGN2102  
ONYX BLACK



RGN2103  
NAVY BLUE



RGN2104  
CRIMSON RED



RGN2106  
LIGHT GREY



RGN2138  
LIGHT PINK

READY STOCK  
ESSENTIALS





**CORPORATE SHIRT**  
Quality Apparels



- Made of 60% Cotton 40% Oxford Fabric
- Hidden Buttons Behind Collar For An Alternate Look
- One Chest Pocket On The Left
- Full Placket Buttons

**BEAM**  
QUALITY APPAREL

**OXFORD  
CORPORATE  
SHIRT**

SIZE	SHOULDER	CHEST	SLEEVE	LENGTH
S(38)	16.5"	37"	21.5"	27"
M(39)	17"	39"	22"	28.5"
L(40)	17"	40"	22"	29"
XL(41)	17.5"	42"	22"	30"
2XL(42)	18"	44"	22.5"	29.5"
3XL(43)	19"	46"	23"	30"
4XL(44)	19"	47"	23"	30"

Note: Size may varies +/-5% from the above mentioned chart.

**FTL3**  
COLORS SELECTION



FTL301  
PEARL WHITE



FTL302  
ONYX BLACK



FTL303  
NAVY BLUE



FLT306  
LIGHT GREY



FTL338  
LIGHT PINK



FTL340  
LAKE BLUE



# BEAM

QUALITY APPAREL

## HIGH QUALITY CORPORATE UNISEX SHIRT

- 40% Cotton + 60% Polyester Fabric
- Full Placket Buttons
- Moisture Wicking Technology
- Poplin Finishing
- V-Edge Collar Design With Iron Fusing

### ACS11

COLORS SELECTION

#### UNISEX LONG SLEEVE

SIZE	SHOULDER	CHEST	SLEEVE	LENGTH
S(38)	16.5"	37"	23"	28"
M(39)	17"	38"	23"	28"
L(40)	18"	39"	23.5"	28.5"
XL(41)	18"	41"	24"	29"
2XL(42)	18.5"	43"	24"	30"
3XL(43)	19.5"	44"	24.5"	31"
4XL(44)	20.5"	47"	25"	32"

Note: Size may varies +/-5% from the above mentioned chart.  
\* 220GSM | 6.50oz



ACS110  
MAROON RED



ACS111  
BLACK



ACS112  
LIGHT PINK



ACS113  
LIGHT BLUE



ACS114  
WHITE

READY STOCK  
ESSENTIALS



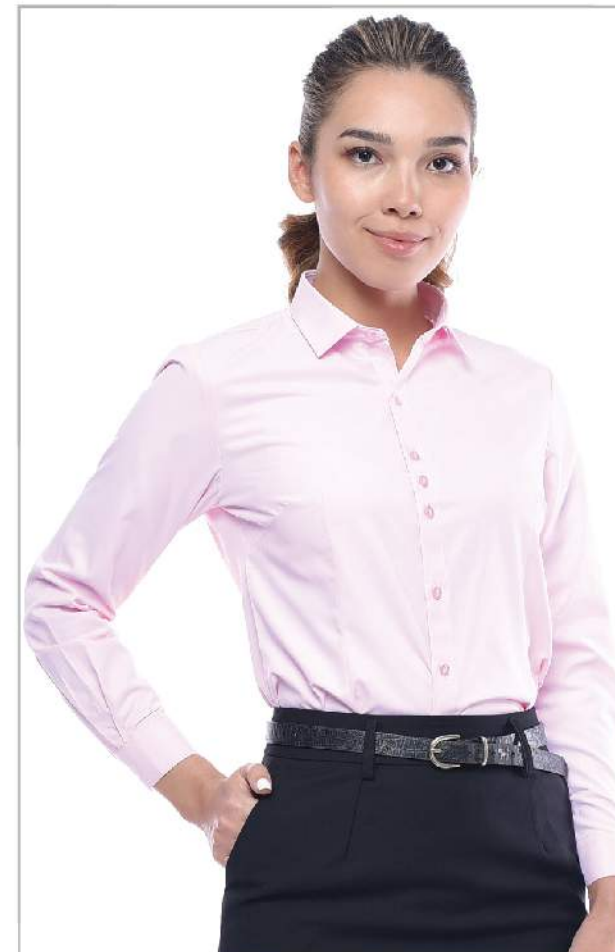
### FTL1

COLORS SELECTION

#### FEMALE LONG SLEEVE

SIZE	SHOULDER	CHEST	SLEEVE	LENGTH
XS(35)	14.5"	35"	21"	22.5"
S(36)	15"	37"	21"	23"
M(37)	15.5"	38"	21.5"	23.5"
L(38)	16"	40"	21.5"	24"
XL(39)	16"	41"	22"	25"
2XL(40)	16.5"	42"	22.5"	25.5"
3XL(41)	17"	44"	23"	26"
5XL(42)	17.5"	47"	23.5"	27"

Note: Size may varies +/-5% from the above mentioned chart.



FTL 101  
WHITE



FTL 110  
LIGHT BLUE



FTL 138  
PINK



# BEAM

QUALITY APPAREL

## HIGH QUALITY CORPORATE SHIRT

- 40% Cotton + 60% Polyester Fabric
- Full Placket Buttons
- Moisture Wicking Technology
- Poplin Finishing
- V-Edge Collar Design With Iron Fusing

### UNISEX SHORT SLEEVE

SIZE	SHOULDER	CHEST	SLEEVE	LENGTH
S(38)	16.5"	37"	8"	28"
M(39)	17"	38"	8"	28"
L(40)	18"	39"	8.5"	28.5"
XL(41)	18"	41"	8.5"	29"
2XL(42)	18.5"	43"	9"	30"
3XL(43)	19.5"	44"	9"	31"
4XL(44)	20.5"	47"	9.5"	32"

Note: Size may varies +/-5% from the above mentioned chart.

## TCS1

COLORS SELECTION



TCS 101  
WHITE



TCS 102  
BLACK



TCS 110  
LIGHT BLUE

## FTS1

COLORS SELECTION



FTS 101  
WHITE



FTS 102  
BLACK



FTS 110  
LIGHT BLUE

READY STOCK  
ESSENTIALS

### FEMALE SHORT SLEEVE

SIZE	SHOULDER	CHEST	SLEEVE	LENGTH
XS(35)	14.5"	35"	7.5"	22.5"
S(36)	15"	37"	7.5"	23"
M(37)	15.5"	38"	7.5"	23.5"
L(38)	16"	40"	8"	24"
XL(39)	16"	41"	8"	25"
2XL(40)	16.5"	42"	8.5"	25.5"
3XL(41)	17"	44"	8.5"	26"
5XL(42)	17.5"	47"	9"	27"

Note: Size may varies +/-5% from the above mentioned chart.







PAT0103

READY STOCK  
ESSENTIALS



CBM3502  
BLACK

CBM3503  
NAVY BLUE

- 65% Polyester 35% Rayon
- (Shell) 100% Polyester
- 3 Pocket Flat Collar Design
- Full Suit Available
- Dual Buttons

**PREMIUM**

**2 BUTTON FITTED BLAZER  
(MALE CUTTING)**

JACKET SIZE CHART

SIZE	SHOULDER	CHEST	SLEEVE	LENGTH
165/S	16.75"	37.8"	23.2"	25.6"
170/M	17.2"	39.4"	23.8"	26.4"
175/L	17.7"	41"	24.4"	27"
180/XL	18.2"	42.5"	24.8"	28"
185/2XL	18.6"	44"	25.4"	28.7"
190/3XL	19"	45.6"	26"	29.5"
195/4XL	19.6"	47.2"	26.5"	30.3"

Note: Size may varies +/-5% from the above mentioned chart.



PAT0102  
BLACK

PAT0103  
NAVY BLUE

PANT SIZE CHART

SIZE	WAIST	HIP	LENGTH
165/S	29"	36.2"	39.3"
170/M	30"	37.4"	40"
175/L	31.5"	38.5"	41"
180/XL	32.6"	40"	41.7"
185/2XL	34"	41.3"	42.5"
190/3XL	35.8"	43"	42.5"
195/4XL	37.4"	44.5"	42.5"

Note: Size may varies +/-5% from the above mentioned chart.



Classic Button Down  
Back Pocket

Elastic Waist Band  
Design





SKT0202

READY STOCK  
ESSENTIALS



CBM2502  
BLACK

CBM2503  
NAVY BLUE

- 65% Polyester 35% Rayon
- (Shell) 100% Polyester
- 3 Pocket Flat Collar Design
- Full Suit Available
- Dual Buttons

**PREMIUM**

**2 BUTTON FITTED BLAZER  
(FEMALE CUTTING)**

JACKET SIZE CHART

SIZE	SHOULDER	CHEST	SLEEVE	LENGTH
155/XS	14"	33"	22"	21.8"
160/S	14.5"	34.6"	22"	21.8"
165/M	15"	36"	22.4"	22.6"
170/L	15.3"	37.8"	22.8"	23.4"
175/XL	15.7"	39.4"	23.2"	24.2"
180/2XL	16"	41"	23.6"	25"
185/3XL	16.5"	42.5"	23.6"	25"
190/4XL	17"	44"	23.6"	25"

Note: Size may varies +/-5% from the above mentioned chart.



SKT0202  
BLACK

SKT0203  
NAVY BLUE

SKIRT SIZE CHART

SIZE	WAIST	HIP	LENGTH
155/XS	24.8"	33"	18"
160/S	26.3"	34.6"	18.3"
165/M	27.5"	36.2"	18.5"
170/L	29"	37.8"	18.7"
175/XL	30"	39.3"	19"
180/2XL	32.2"	41"	19"
185/3XL	33.8"	42.5"	19.3"
190/4XL	35.4"	44"	19.3"

Note: Size may varies +/-5% from the above mentioned chart.



Classic Button Down  
Back Pocket



Elastic Waist Band  
Design





**CUSTOMIZATION**  
WITH ULTIFRESH TECHNOLOGY



**ULTIFRESH CUSTOMIZATION**

Create your very own anti-bacterial & anti-odor apparels from scratch with 8-steps customization process! A perfect alternative for brands or institution who wish to incorporate our unique technology to their new or existing apparels design.





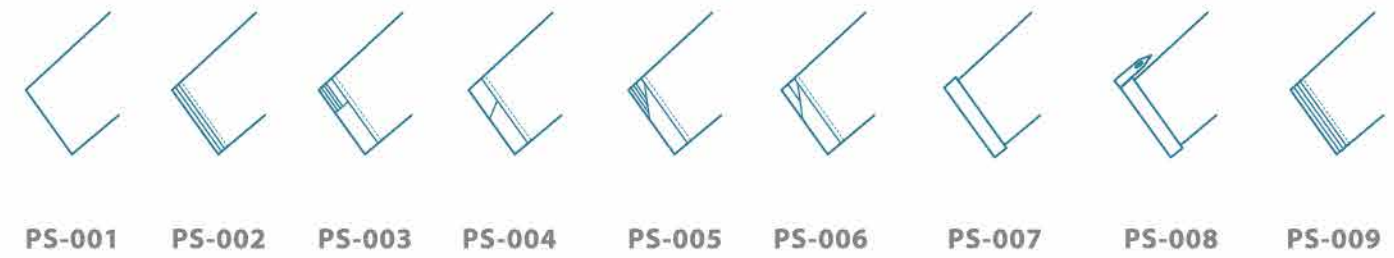
STYLES: POLO T-SHIRT



STYLES: POLO T-SHIRT



STYLES: SLEEVES

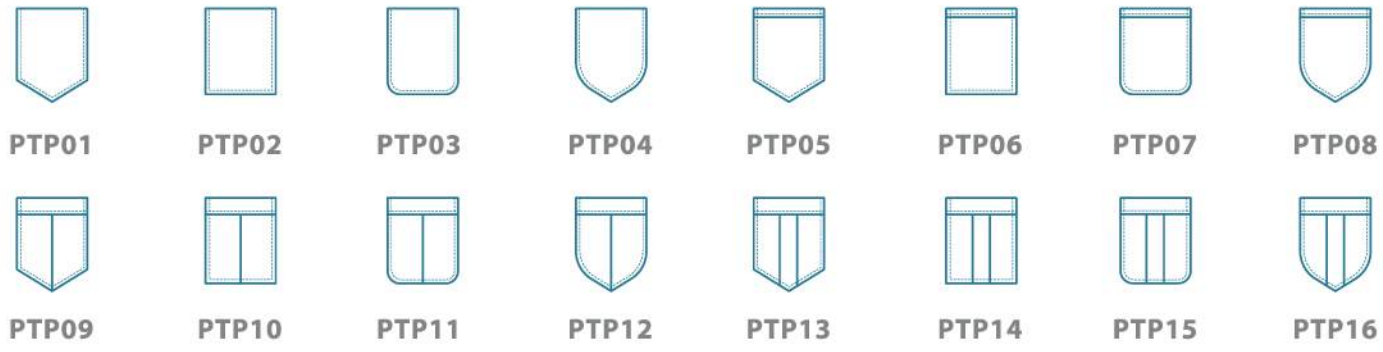


STYLES: COLLAR





**STYLES: POCKETS**



**STYLES: JACKETS**



**STYLES: JACKETS (BACK)**



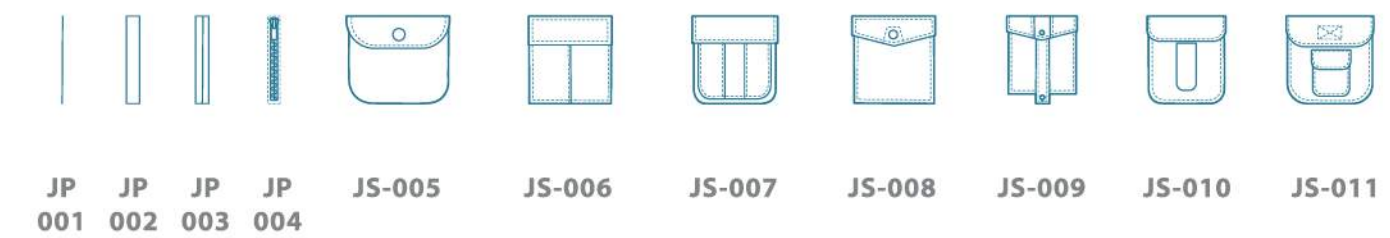
**STYLES: COLLAR**



**STYLES: SLEEVES**



**STYLES: POCKETS**





**STYLES: BUTTONS**

\*\* FOR POLO / SHIRT ONLY \*\*



**STYLES: ZIPPER HEAD**





# ULTIFRESH.NET

we deliver fresh apparels

Follow Us @:



Visit Us @:  
<https://www.ultifresh.net>